

# Public Document Pack

**Tony Kershaw**

Director of Law and Assurance

If calling please ask for:

Clare Jones on 033 022 22526

Email: [clare.jones@westsussex.gov.uk](mailto:clare.jones@westsussex.gov.uk)

[www.westsussex.gov.uk](http://www.westsussex.gov.uk)

County Hall  
Chichester  
West Sussex  
PO19 1RQ  
Switchboard  
Tel no (01243) 777100



12 July 2022

Dear Member,

**County Council - Friday, 15 July 2022**

Please find enclosed the briefing notes for the motions to be debated at the meeting of the County Council to be held on Friday, 15 July 2022.

<b>Agenda No</b>	<b>Item</b>
------------------	-------------

<b>13(a)</b>	<b>Motion on Integrated Care System</b> (Pages 3 - 6)
--------------	---

Briefing note on factual background information attached.

<b>13(b)</b>	<b>Motion on Support for Carers</b> (Pages 7 - 10)
--------------	--

Briefing note on factual background information attached.

Yours sincerely

Tony Kershaw  
Director of Law and Assurance

**To all members of the County Council**

This page is intentionally left blank

## **County Council – 15 July 2022**

### **Item 13(a) – Notice of Motion by Cllr Ali**

#### **Integrated Care System – Briefing Note**

#### **The Health and Social Care Act 2022 and establishment of Integrated Care Systems (ICS)**

The [Health and Care Act 2022](#) replaces the previous model of competition between providers of healthcare services with a new approach that encourages collaboration to meet the needs of the population. One of its principal outputs is the establishment of an Integrated Care System (ICS) for each area of England, from 1 July 2022. This will be a system through which the NHS as an organisation will move to closer integration but also how social care authorities and the NHS will discharge a 'duty of collaboration' as required by the legislation.

An ICS brings together the organisations planning, buying and providing publicly-funded healthcare – including mental health and community care services – to the population of a geographical area. As well as the NHS this includes Local Authorities and other partners. The [Sussex ICS](#) is made up of two elements:

- An NHS Integrated Care Board (ICB) responsible for strategic planning, resource allocation and performance of NHS organisations in the area of the ICS. These have replaced and merged Clinical Commissioning Group functions, as well as some functions from NHS England. In Sussex this will be called the NHS Sussex ICB and will cover East and West Sussex and Brighton and Hove. West Sussex County Council is represented by the Director of Public Health.
- An Integrated Care Partnership between the NHS Sussex ICB and the social care authorities within its area overseen by a forum which will be responsible for agreeing the strategic direction to meet the broader health, public health and social care needs of the population in the ICS footprint. In Sussex this is called the Sussex Health and Care Assembly, comprising of representatives from the Sussex ICB, West Sussex County Council (represented by the Cabinet Member for Public Health and Wellbeing), East Sussex County Council and Brighton & Hove City Council.

Aside from the new Duty to Collaborate there are no other changes to the County Council's statutory role and responsibilities for services and budgets, or the role of Health and Wellbeing Boards and the Health and Adults Social Care Scrutiny Committee. The County Council remains responsible for setting the Authority's priorities and budgets through the Our Council Plan process.

#### **Integration White Paper and the role of Place**

On 9 February 2021 the Government published a new White Paper on health and social care integration called '[Joining up care for people, places and populations](#)'. This forms part of wider plans to reform the health and social care system building on the Health and Care Act and the Social Care Reform White Paper

'People at the Heart of Care' (December 2021). The White Paper sets out a vision for integrated health and care services and complements the direction of travel as an ICS in Sussex and at the local level in West Sussex, focusing on:

- Population health management using public health principles
- Addressing health inequalities
- Transformation of clinical pathways and health and care service models
- Primary care – accelerate the development of Primary Care Networks (PCNs) and neighbourhood working
- Priorities for social care and housing, and other services related to delivering outcomes for our community
- Operational issues and pressures

The following high-level principles have been produced to underpin how the NHS Sussex ICB will work with and at Place, to support close working between the three Local Authorities and the NHS in the ICS:

- The three Place-based Health and Care Partnerships in Sussex are collaborative and non-statutory arrangements where all the organisations responsible for planning commissioning and delivering health and care services for the populations in that geographical area work together. The Director of Adults and Health represents the County Council at Place-based level.
- In collaborating at Place, individual statutory organisations are responsible for agreeing decisions relating to their budgets and services according to their existing practice and processes.
- The Joint Strategic Needs Assessments and the Health and Wellbeing Strategies agreed through the three Health and Wellbeing Boards set the evidence base and strategic framework within which priorities at Place are identified.
- Place-based planning, commissioning and delivery will be focussed on a clear scope of services aimed at integrating care, improving health and reducing health inequalities. Wider partners in the voluntary, community, social enterprise and independent care sector, and borough and district councils (where applicable), will be engaged to mobilise and support the best use of the resources collectively available.

### **Links to the Sussex ICS – Assembly and Board**

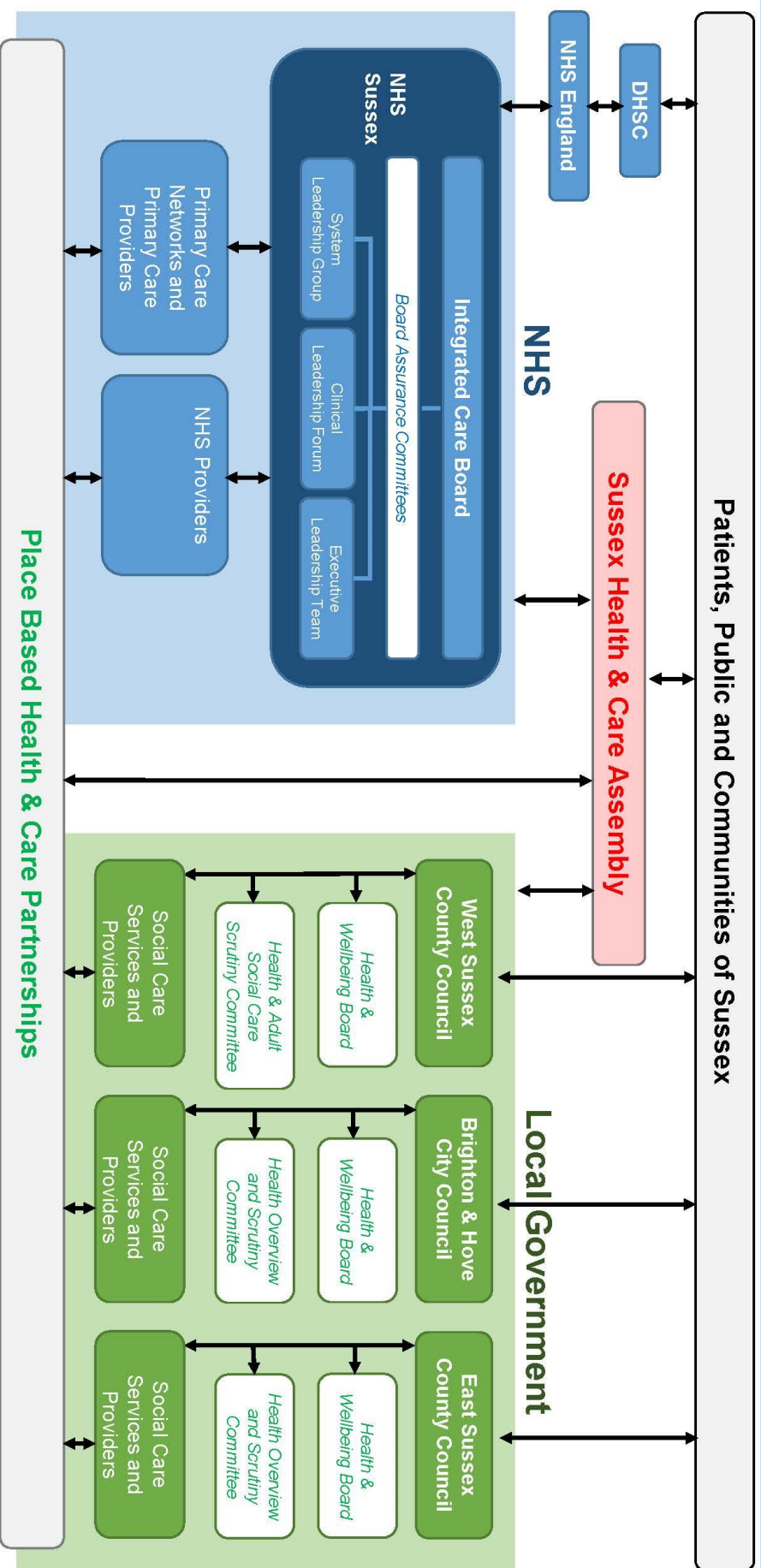
- At ICS level, the Sussex Health and Care Assembly will be responsible for producing the Integrated Care Strategy for the system. This high-level strategy will reflect the priorities in, and be built from, the three Health and Wellbeing Strategies ([West Sussex Health and Wellbeing Board Strategy 2019-2024](#) (PDF, 3MB)).
- NHS Sussex, through the ICB is required to develop and implement a Delivery Plan that delivers the Assembly's Integrated Care Strategy. The principle of subsidiarity is paramount – NHS Sussex's Delivery Plan will be implemented through the three place-based Health and Care Partnerships, unless there is collective agreement that it makes more sense to deliver an element at the pan-Sussex level. NHS Sussex will align resources and management capacity to support the three place-based Health and Care Partnerships to implement the Delivery Plan.

- Effective delivery at place therefore requires the full involvement of local authority partners in the development of NHS Sussex's Delivery Plan before decisions are taken by the NHS Sussex Board or its executive.
- Update reports are provided to the West Sussex Health and Wellbeing Board driven by the outcomes and priorities set out in the West Sussex Plan. The diagram overleaf provides a representation of the governance arrangements.

**Alan Sinclair**

Director of Adults and Health

# Sussex ICS Arrangements



**County Council – 15 July 2022**

**Item 13(b) – Notice of Motion by Cllr O’Kelly**

**Support for Carers – Briefing Note**

**Support and services available for Carers in West Sussex**

The Countywide Carer Information, Advice, Assessment and Support Service is provided by our contracted partner and charity, Carer Support West Sussex. Key service areas include, but are not limited to:

- information and advice
- statutory carer assessments
- generic and specialist carer support
- targeted carer support in hospital settings
- carer training/up-skilling
- carer health and wellbeing fund payments
- Carer equipment and Technology Enabled Care
- Carer counselling and emotional support via a quick response ring-back service.

In addition to the above, there are other services including:

- Carer direct payments
- The Carer Health Team
- Carer Respite at home - one to one support (planned and Emergency)
- Carer respite way from home (a range of different group models provided by a range of commissioned partners)
- Young onset dementia weekends for carers and their partner
- Carer Bereavement Support via our partners CRUSE
- Support for carers back into training or into work (paid or voluntary).

There is a good local offer for carers, particularly specialist information and advice to carers of all age groups and support, often without the need for a statutory assessment. All areas of the county provide respite options for the carers of frail elderly and or living with dementia. There is a commitment to support carers at every stage of their caring journey. From:

- becoming a carer for the first time;
- offering specialist clinical input if health is affected;
- providing benefits advice and emergency payments in the case of hardship.

Through to:

- bereavement support; and
- support in employment or to return to work.

At the end of May 2022, Carers Support West Sussex had registered on their database just under 33,000 carers. It is not possible to have a definitive figure of the numbers of family and friend carers in the county, as not everyone will recognise/identify as such.

### **Financial support for carers delivered in last financial year**

Funding from the Department of Work & Pensions Household Support Fund, passported by the County Council's Communities Directorate, complemented by other funding streams enabled Carers Support West Sussex to provide £521,000 in wellbeing and hardship grants to 1,702 carers last financial year.

These grants (£500 maximum) were offered to carers that were at risk of breaking down in their caring role. Due to financial pressures some carers cannot, for example, meet their basic needs, access equipment/support to help them manage their caring responsibilities.

Examples of spend include:

- Basic living essentials – utilities and food
- Household items (white goods)
- Work or education related expenses (interview clothes, travel)
- Contribution towards rent arrears where there is a clear and obvious risk of homelessness

These payments have often usefully been used as a 'bridge' to support the carer with essentials whilst other processes are put in place (Carer Assessment/Direct Payments/Grants or completing claims e.g. Carers Allowance, which may take eight weeks). 95% of carers say the funds have helped them feel less anxious or stressed about their caring situation; and 94% say they have helped improve their health and wellbeing.

In addition, supermarket vouchers, funded from Household Support Fund and generated by the County Council Community Hub, worth £50 each, have been issued to 6,870 carefully chosen carers to help with essentials during a time of rising costs.

The criteria applied are as follows:

- Contact date range 01/04/21 to 18/03/22
- Carers who have had two or more activities
- **Or** are of higher concern/risk
- **Or** who have had a carer assessment
- **Or** who have received a fund award

(Carers who received a locally managed Carers Support West Sussex wellbeing and hardship award were excluded from this scheme)

### **Carer's Allowance**

Based on 2018 data from the Office of National Statistics, 7,140 carers in West Sussex were accessing Carer's Allowance from the Department for Work and Pensions. It should be noted that not all carers are eligible for Carer's Allowance, especially those over 65 years and claiming a State Pension. The Carer's Allowance is currently £69.70 per week.

Since May 2021, a Welfare Benefits Worker has been in post dedicated to supporting carers and over the past 12 months 860 carers have been supported with 1:1 advice and review of their circumstances. The service has allowed these



carers (who were often unaware of their entitlements to claim benefits) to claim £1,616,545 in additional annual benefit.

The Welfare Benefits Worker offers Carer Benefits Surgeries four days each week, monthly Welfare Benefits training sessions for carers delivered through Carer Support Groups and monthly Q&A sessions for staff.

The most common benefits discussed with carers are Carer's Allowance, Attendance Allowance, Universal Credit and Pension Credit. However, carers' entitlements to Council Tax Reduction, New-Style Employment Support Allowance and Housing Benefits are also covered. The Carer Benefits appointments are now regularly booked between three and four weeks ahead as demand is increasing.

**Alan Sinclair**

Director of Adults and Health

This page is intentionally left blank